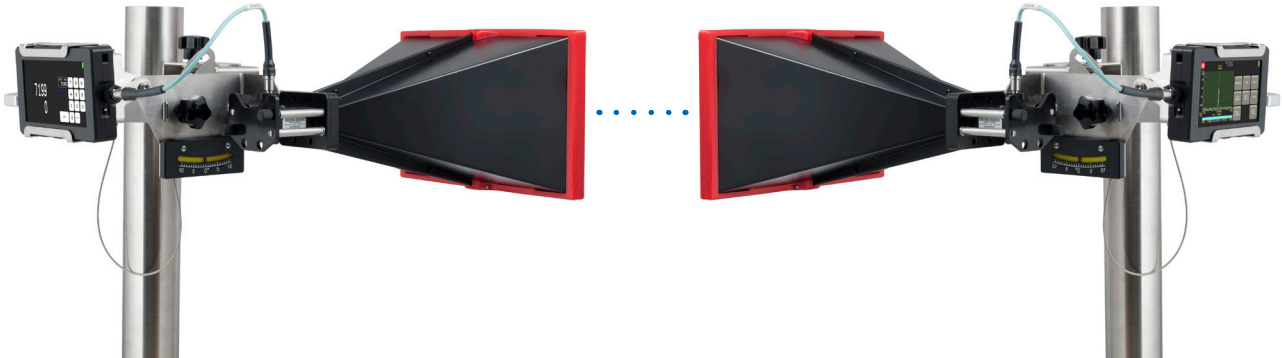




# Line of Sight verification kit introduction



SAF LoS verification kit is a small size, handheld battery operated solution that uses radio frequencies to verify microwave point to point radio line of sight.

#### Benefits:

- Verification for distances of up to 85km/52miles, using small antennas
- Reliable results
- Battery operated solution, no external power source required
- Easy to take up on the tower
- LoS verification before actual link installation
- Easy to use, quick measurements
- Results applicable for PtP links operating in frequencies from 5GHz up to 38GHz

#### SG Compact signal generator side

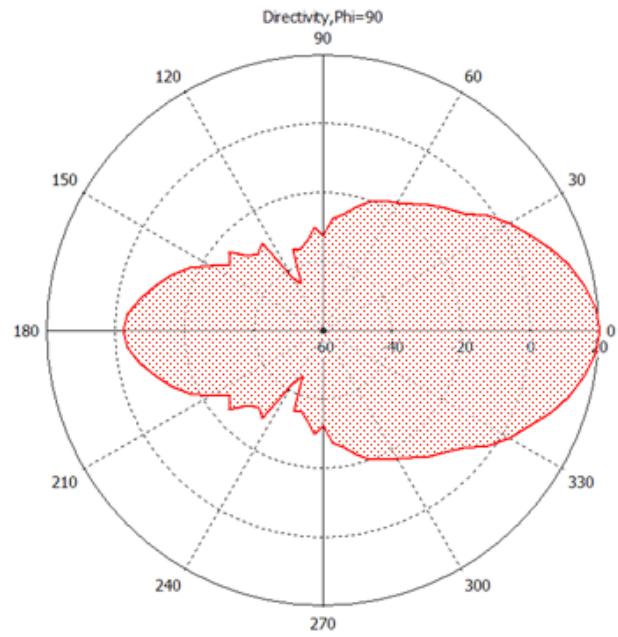
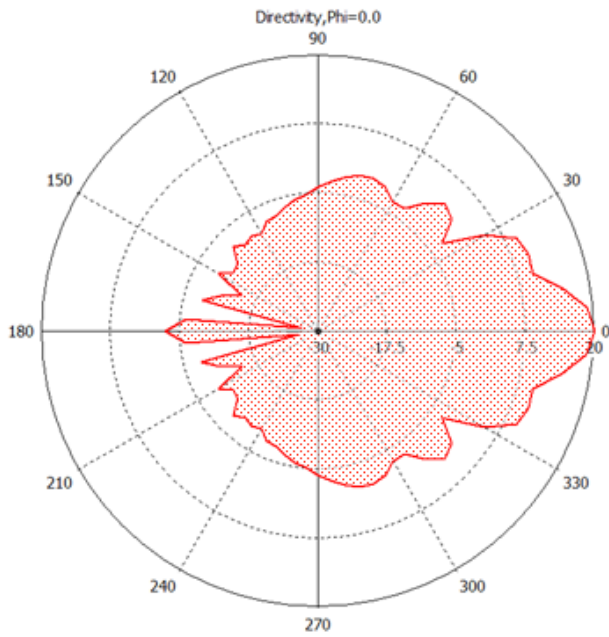
P/N	JOSSAG11
Frequency range	5.925 – 12.000
Output power range	-3...+13 dBm
Frequency accuracy	+/- 10 ppm
Phase noise	< -80 dBc/Hz @ 100 kHz
Adjustable frequency step	1 MHz
Adjustable power step	1 dBm
Signal form	Continuous wave
Sweep speed	0.5s @ 100 MHz Span
Accuracy	+/- 1 dB*
Output	50 ohm SMA (f)
Interface	Mini USB 2.0 (1.1)
Battery	2380 mAh Lithium Polymer
Battery life	up to 4h
Operating temperature	-15°C to +55°C / 5°F to 131°F
Dimensions	128 x 81 x 24 mm 5.04 x 3.2 x 0.94 in
Weight	0.3 kg / 10.6 oz

\*Guaranteed throughout all the temperature range

#### Spectrum Compact spectrum analyzer side

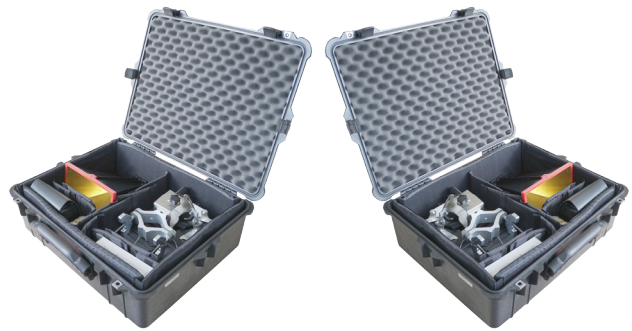
P/N	JOSSAP11
Frequency range	5.925 – 12.000
Input dynamic range	-105 to – 40 dBm
Max input power	0 dBm
RBW	1 MHz
VBW	300 kHz
Min. Span	100 MHz
Max. Span	full bandwidth
Sweep speed	0.5s @ Min. Span
Accuracy	+/- 1 dB*
Input	50 ohm SMA (f)
Interface	mini USB 2.0 (1.1)
Battery	2380 mAh Lithium Polymer
Battery life	up to 4h
Operating temperature	-15°C to +55°C / 5°F to 131°F
Dimensions	128 x 81 x 24 mm 5.04 x 3.2 x 0.94 in
Weight	0.3 kg / 10.6 oz

\*Guaranteed at 21°C/70°F CW signal



#### Electrical and mechanical specifications for LoS antenna

P/N	J0AA06R001
Frequency range	5.925 – 8.20
Gain (typical), dBi	21
Dimensions, mm/inch	250 x 235 x 155/9.84 x 9.25 x 6.10
Net weight, kg/lb	1.25 / 2
Flange (connector)	WR173 (UDR70)
Matching Spectrum Compact unit	J0SSAP11
Matching Signal Generator unit	J0SSAG11
Beamwidth (E-plane) deg	14.3
Side lobe level (E-plane)	-9.5 dB
Beamwidth (H-plane) deg	17.6
Side lobe level (H-plane)	-22.4 dB
Front-to-Back ratio	22.38



#### What you will get:

- Spectrum analyzer Spectrum Compact 6 – 12GHz
- Signal generator SG compact 6 – 12GHz
- 2x 21dBi small horn antenna with mounting bracket
- 2x waveguide adapter UDR70 to SMA, 5.38-8.2 GHz, WR137
- 2x 2.92mm coaxial RF cable
- 2x lanyard
- 2x USB to mini USB cable
- 2x AC/DC USB charger
- 2x protective case
- RF filter with 9GHz cut-off frequency